

NEW

HITACHI
Inspire the Next

Coding & Marking Solutions

Software Suite

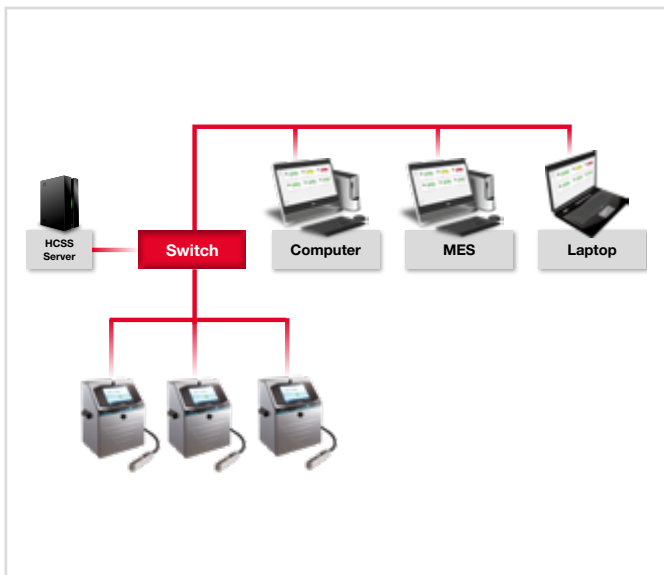


Coding Software Suite

As the core of Hitachi's Coding & Marking Solutions, the Coding Software Suite (HCSS) from Hitachi has a client/server architecture with flexible web browser based user interface for operators to design labels, control, manage and monitor printers individually or in groups, access the printer dashboards and configure and manage automated printing applications dynamically.

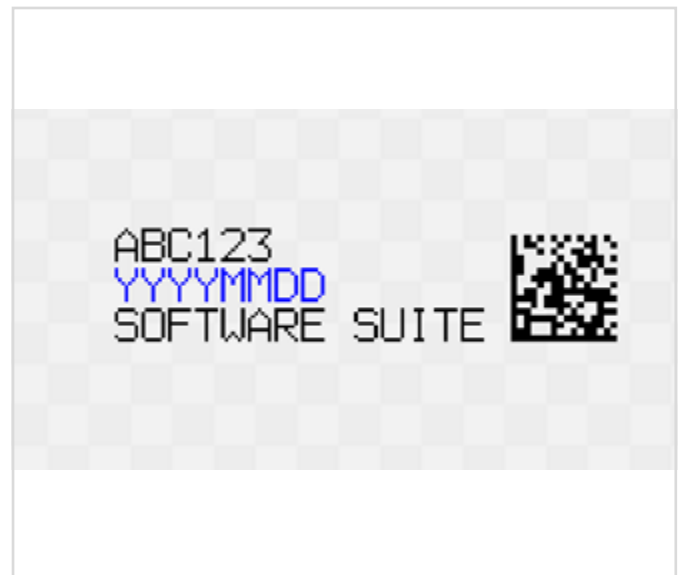
Client Server Web Based

Install once, access anywhere via web browser on PC, tablet or smartphone.



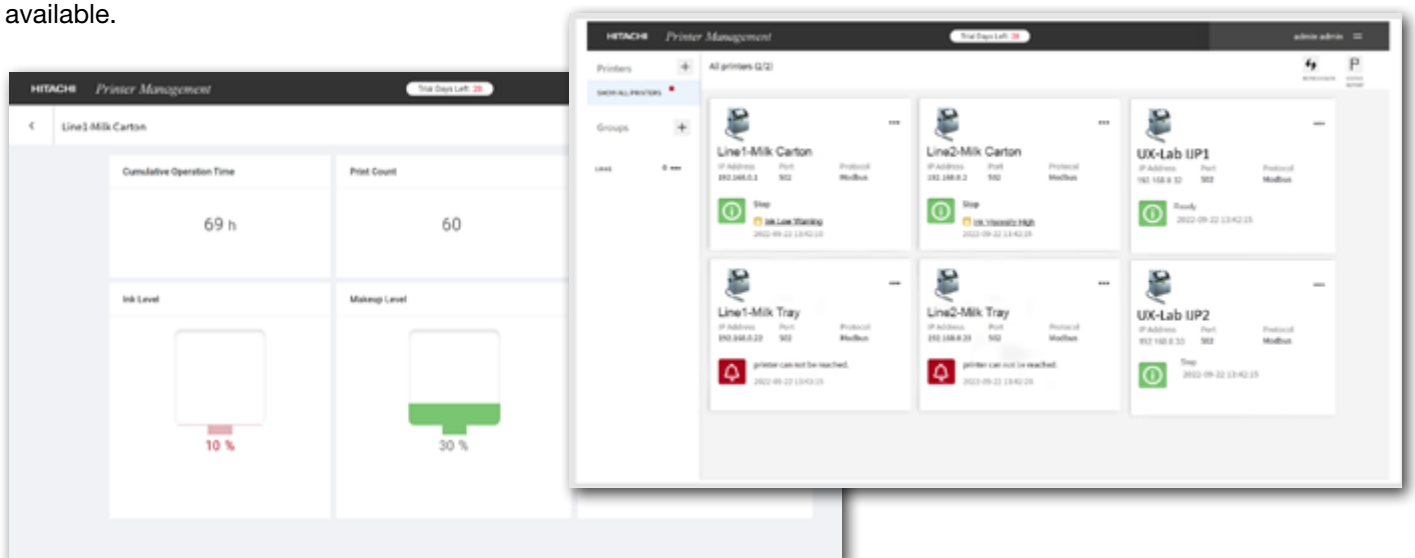
Message Designer

Powerful WYSIWYG (what you see is what you get) message designer for Hitachi Continuous Inkjet printers.



Printer Management

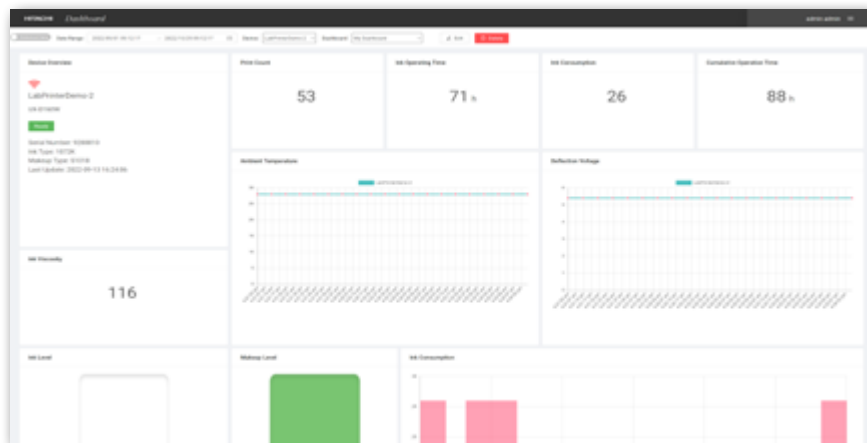
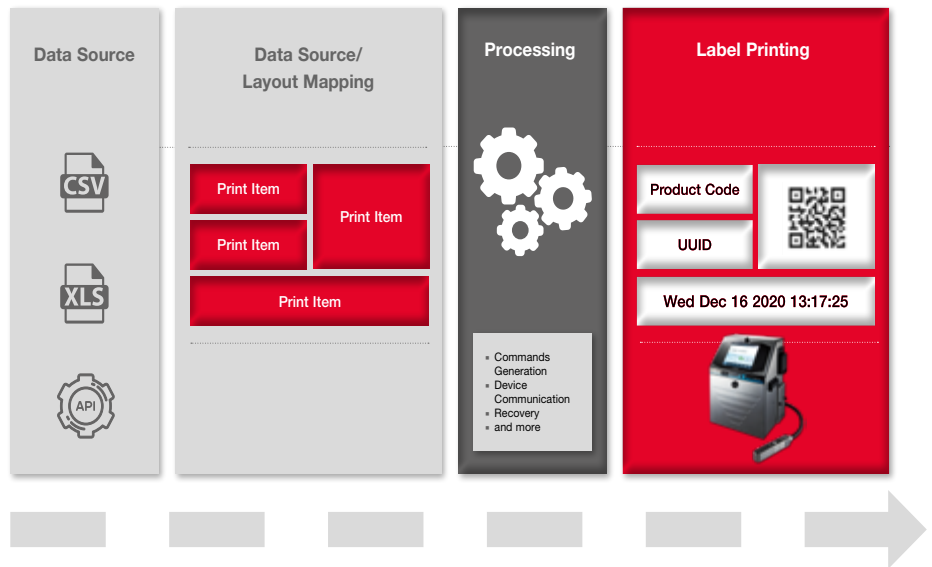
Individual printers or printer groups can be managed as the target printer(s) and the statuses of all networked printers can be viewed in one aggregated view or individual printers in detail. Key IJP remote operations available.



End to End Coding Automation

Printing Automation

Powerful and configurable platform to fetch data from local or remote customer data source and dynamically populate labels to meet various application requirements.

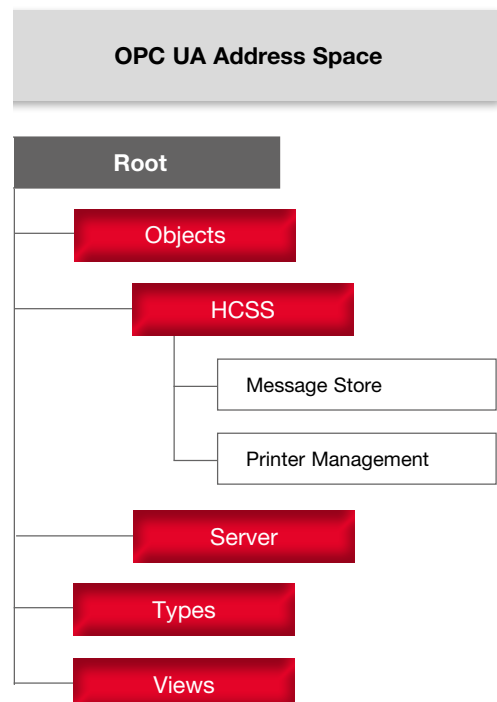


Dashboard

All critical printer status and data can be viewed from predefined or customized dashboards to remotely monitor and manage printers on production lines.

OPC-UA Connect

Flexible OPC-UA server application, provides powerful business logics and bridge to connect customers' MES and ERP system to network printers.



End to End Coding Automation

Message Designer

User-friendly HMI allows users to manage:

- **Message style**
 - Individual
 - Free layout
- **Print format**
 - Set number of lines
 - Add/remove columns
 - Bold, Dot Matrix, Inter-Character and line spaces
- **Print specification**
 - Character height
 - Ink drop use
 - Character width and orientation
 - Print start delay
 - Product speed matching
 - Speed and fine control compensation
 - Encoder pulse rate division factor
 - Line speed
 - Print distance (Head to target)
 - Print target width
 - Actual print width
 - Repeat count and intervals
 - Target sensor timer and filter
 - Ink drop charge rule
- **Calendar and count condition**

Create the message with diverse contents, e.g:

- Alphanumeric
- Calendar
- Counter
- Time counter
- Logo (*.bmp) elements
- GS1 compliant 1D and 2D codes
(See HCSS user-manual for supported codes)

Powerful message management, persistence and control can transfer the created message between the file system/database and the printer or printer groups.

WYSIWYG message preview and listing.

Printer Management

- **Printer registration management** - add/remove printers or printer groups
- **Printer grouping management** - create and edit printer group
- Send and print message to group printers simultaneously
- Remote operation (start, shutdown, ready, standby, fault clear, Online/Offline)

Monitor with real time status of printers or printer groups:

- Ink operating time
- Ink (remaining) level*
- Makeup (remaining) level**
- Ink pressure
- Ink/Makeup replacement warning
- Print count
- Maintenance and environment information

Individual and grouped printers overview on a single screen. Preview of data source & message layout.

* available from UX-D Series only

** UX-B and UX-D860W are not supported

Printing Automation

- CSV, Text or Databases data source (SQL server, PostgreSQL, MySQL) connections.
- IJP Protocols support for Modbus (TCP) or RS-232C (Tunneling)
- Data preview
- User friendly mapping between label items and data source fields
- Dynamic Print Automation Jobs
- Preview of data source and message layout
- Individual or group target printers setting
- Automatic print speed
- Repeat printing function
- Multiple print job creation
- Print job status monitor and reporting

OPC-UA Connect

- Connect with HCSS using OPC-UA Protocol
- List IJPs
- Read IJP Parameters
- Operations can be performed e.g:
 - Set/Reset Print Count
 - Get Alarm Count
 - Get Alarm History
 - List Messages
 - Send Message to Printer
 - Send Message to Group
 - Update Message
 - Read Current Message
 - Built-in customer business logics

Dashboard

Display detailed status overview of all connected printers using a collection of different widget types

- Various dashboards to display available printer status data and remaining operation time for parts which require regular maintenance and replacement
- Dashboards can be customized by resizing, replacing, and repositioning widgets
- Switch between Live and Historical mode
- Selection date-range (Date/Time) for filtering data
- Reported parameters include:
 - Ink/Make-up levels (UX Series only)
Ink viscosity, Ink pressure, Ink use time
 - Ink/Make-up consumption
 - Print count, cumulative operating time, ambient temperature
 - Deflection voltage, Excitation V-Ref, Excitation frequency
 - Filters, Valves, Pump remaining usage time
 - Operation, Warning status
 - Printer Type, Serial Number

Technical Specification

System requirements:

- Installation requires admin rights
- 8 GB RAM or higher
- Windows 10 64-bit OS
- 30 GB disk space (for large number of messages, additional disk space might needed)
- Installer manages all other prerequisites
- Recommend browser: Chrome

Languages:

English, Japanese, Simplified and Traditional Chinese, Spanish, French, German, Portuguese, Vietnamese, Arabic, Korean

Printer support:

RX-SD/RX2-SD (Modbus/TCP)
UX Series*

* UX-B and UX-D860W are not supported

HCSS usability may be limited based on the used devices and screen sizes.

User Management

- Authorisation administration
- User registration and password management
- Role creation and definition
- Function and feature permissions management



30 days trial

URL: <https://hitachicoding.com/en/software-suite/download-page>



Hitachi Software Suite Help Center

URL: <https://hitachicoding.com/en/software-suite>

Head Office

Japan

☎ Hitachi Industrial Equipment Systems Co., Ltd.
Phone: +81 3 4345 6000
www.hitachi-ies.co.jp
info@hitachicoding.com

Sales Offices

America

☎ Hitachi Industrial Equipment & Solutions America, LLC
Phone: +1 866 583 0048
www.hitachi-iesa.com/marketing
InkJet-printers@hal.hitachi.com

Asia

☎ Hitachi Asia Ltd.
Phone: +65 6305 7400
www.hitachi.com.sg/ice

China

☎ Hitachi Industrial Equipment Systems (China) Co., Ltd.
Phone: +86 21 5489 2378
www.hitachi-iec.cn

Europe

☎ Hitachi Europe GmbH
Phone: +49 211 5283 0
www.hitachi-industrial.eu
info@hitachicoding.com

Oceania

☎ Hitachi Australia Pty Ltd.
Phone: +61 2 9888 4100
www.hitachi.com.au/products

Follow us:

